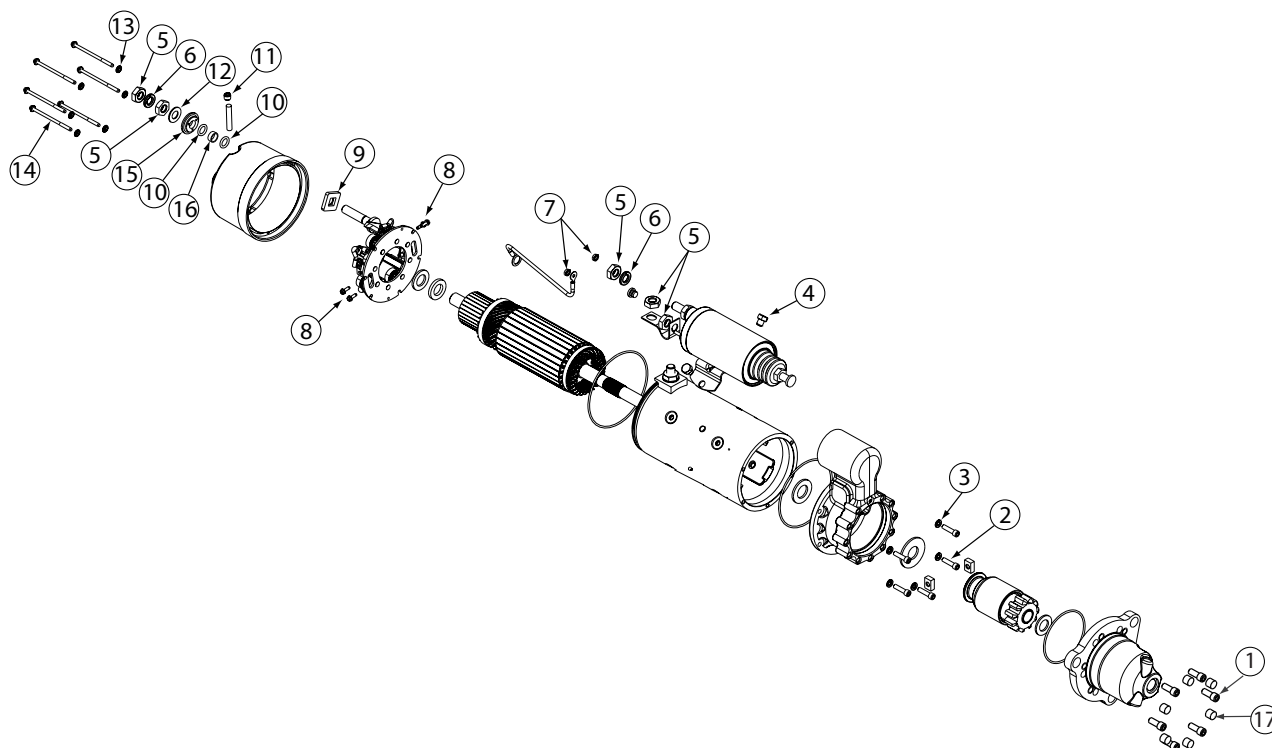


Source: Leece-Neville Heavy Duty Systems Division - Arcade, NY USA
Date: JULY 7, 2017
Bulletin No: TSB-3010
Models: M-Series Starter Motors
Subject: Hardware Kit for M-Series Starter Motors K212104624S

NOTE: All of these components are part of the hardware kit and not available for individual purchase.



Important: The information contained in this bulletin is intended for use by trained, professional technicians who have the proper tools, equipment, and training to perform the required maintenance described above. This information is NOT intended for 'do-it-yourselfers'; and you should not assume that this information applies to your equipment. If you have any questions regarding this information please visit our website at www.prestolite.com, or contact our technical service department at:

Date: JULY 7, 2017

Bulletin No: TSB-3010

Note: All of these components are part of the hardware kit and not available for individual purchase.

Description	QTY	Key	Where Used
SCREW, 5/16-18 SOCKET HEAD	6	1	Holds nose to shift lever hsg
SCREW, 1/4 X 1 SOC HD CAP	5	2	Holds shift lever hsg to motor
WASHER, LOCK 1/4	5	3	Lock washer for item 2
SCREW, 3/8-24 X 3/8	2	4	Holds solenoid to motor
NUT, 1/2-13 UNC	5	5	Nuts for solenoid and motor terminals
NUT, 1/2-13 UNC	2	5	Used on positive and negative studs. Stainless
NUT, 1/2-13 UNC	2	5	Nuts for solenoid and motor terminals. Stainless
WASHER, LOCK 1/2	2	6	Used on solenoid positive stud
LOCKNUT, #10-32	2	7	Holds jumper wire to solenoid
LOCKNUT, #10-32	2	7	Holds jumper wire to solenoid. Stainless
SCREW TAP #10-32	4	8	Holds brush to brush plate
INSULATOR	1	9	Negative stud insulator
O-RING	2	10	Negative stud seal
PLUG, PIPE	1	11	Holds comm hsg wick in comm hsg
WASHER GUARD 1/2	1	12	Negative stud hardware
WASHER, SEALING	6	13	Comm bolt sealing washer
BOLT, #10 X3.28	6	14	Holds comm hsg to motor
INSULATOR	1	15	Negative stud insulator
BUSHING INSULATION	1	16	Negative stud insulator
NOSE HOUSING PLUGS	6	17	Nose housing
5/16-18 BUTTON HEAD SCREW	1	N/A	Shift lever hsg. hardware
O-RING	1	N/A	Shift lever hsg. hardware

Important: The information contained in this bulletin is intended for use by trained, professional technicians who have the proper tools, equipment, and training to perform the required maintenance described above. This information is NOT intended for 'do-it-yourselfers'; and you should not assume that this information applies to your equipment. If you have any questions regarding this information please visit our website at www.prestolite.com, or contact our technical service department at: